

Market Close: 12 June 2026

June 12, 2026

Prepared by: Economic, Exchange and Stock Market Analysis
 analisis@monex.com.mx

- The peso closed the session with a **0.10% appreciation**, trading within a range of **MXN 17.17 to 17.27** per dollar.
- For the overnight session, we estimate **USD/MXN will trade between MXN 17.12 and 17.29**.
- **Equity markets in both the U.S. and Mexico posted gains.**

Economic Highlight: Inflation in Germany

The economic calendar was relatively modest, but Germany’s consumer inflation report stood out. Prices declined 0.2% month-on-month in May, reversing the 0.6% increase recorded in the previous month.

Peso Posts Strongest Weekly Gain in Nearly a Month

The peso strengthened during today’s session, closing at MXN 17.23 per dollar, representing an appreciation of 0.10% versus the previous close. Meanwhile, the DXY edged lower, ending the day down 0.07%. The peso benefited from improved risk appetite, supported by expectations of a potential truce in the Middle East. Looking ahead to the overnight session, we expect USD/MXN to fluctuate between MXN 17.12 and 17.29, amid positive market sentiment and potential geopolitical developments over the weekend.

Equity Markets Advance

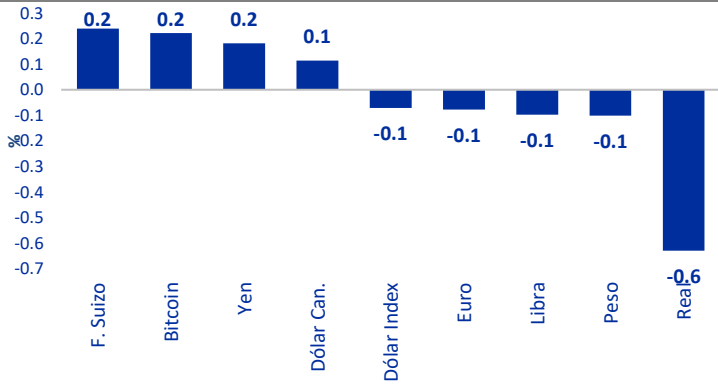
At the end of the week, the major U.S. equity indices posted gains. The Nasdaq rose 0.31%, the S&P 500 advanced 0.50%, and the Dow Jones gained 0.70%. In Mexico, the IPyC climbed 1.46%, closing just below the 68,000-point level.

USD/MXN Exchange Rate



Source: Bloomberg.

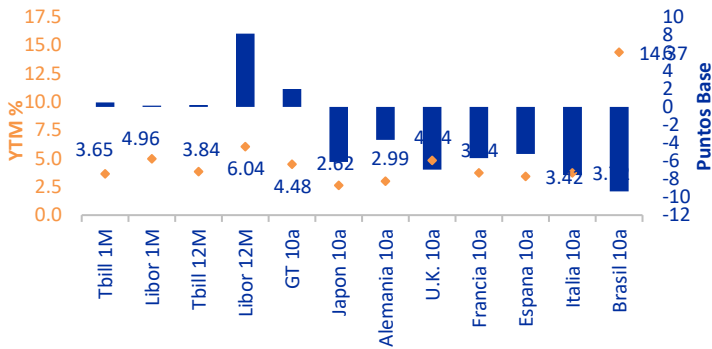
Currencies



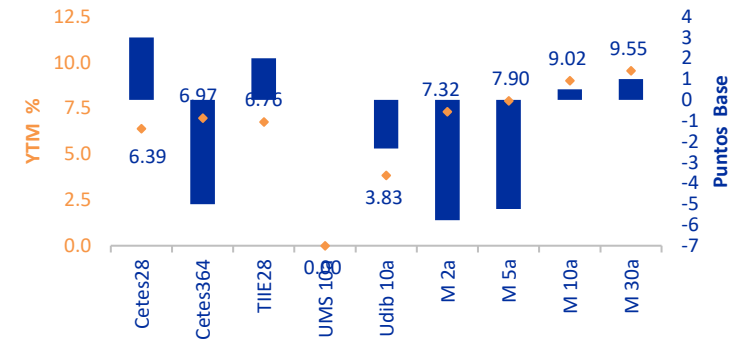
Currencies

	USD	EUR	JPY	GBP	CAD	BRL	MXN
MXN	17.2311	19.9347	0.1075	23.0966	12.3220	0.2938	WEIGHTS
BRL	5.0630	5.8574	0.5445	6.7864	3.6206	REAL	0.2938
CAD	1.3984	1.6178	0.0087	1.8744	DOLLARS	0.2762	0.0812
GBP	0.7460	0.8631	0.0047	POUNDS	0.5335	0.1474	0.0433
JPY	160.2200	185.3585	YEN	214.7589	114.5738	31.6453	9.2983
EUR	0.8644	EUROS	0.0054	1.1586	0.6181	0.1707	0.0502
USD	DOLLARS	1.1569	0.0062	1.3404	0.7151	0.1975	0.0580

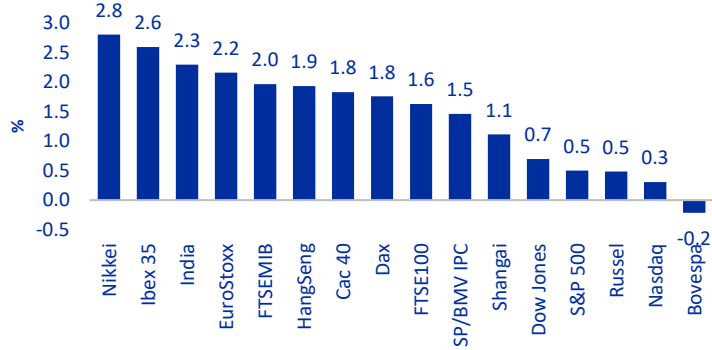
International Fees



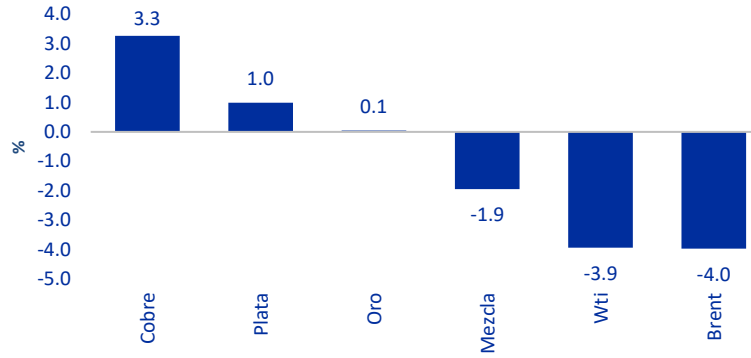
Local Rates



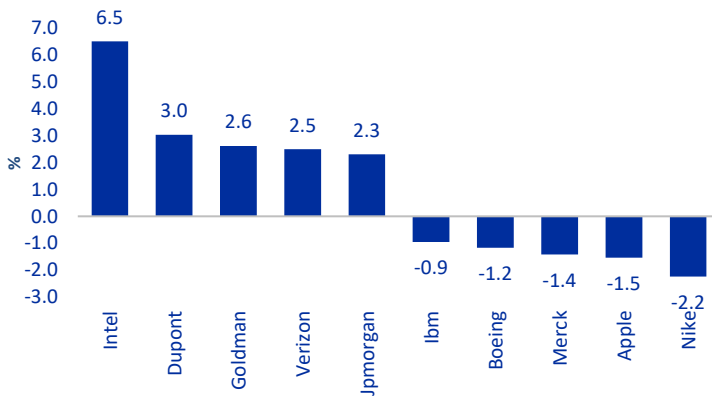
Indexes



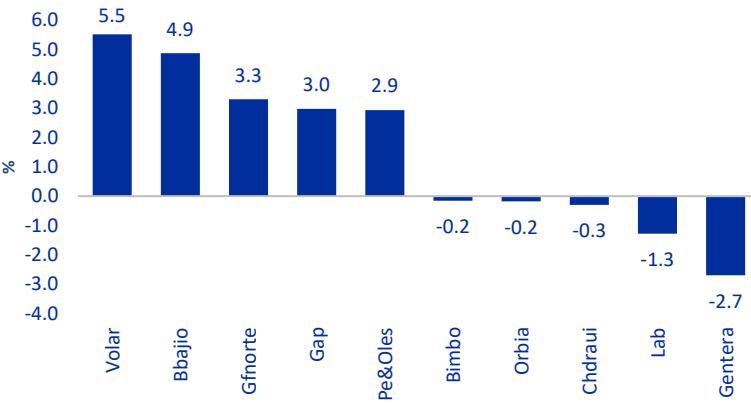
Commodities



Dow Jones (Winners/Losers)



S&P/BMV IPC (Winners/Losers)



Closures			Variation				
Currencies	Current	Previous	1d	5d	1m	Acum. 2026	12m
Weight	17.23	17.25	-0.10%	-1.39%	0.03%	-4.31%	-8.75%
Dollar Index	99.79	99.86	-0.07%	-0.28%	1.51%	1.49%	1.91%
Euro	1.16	1.16	-0.08%	0.41%	-1.45%	-1.51%	-0.13%
Yen	160.22	159.93	0.18%	-0.04%	1.64%	2.24%	11.67%
Libra	1.34	1.34	-0.10%	0.46%	-1.00%	-0.53%	-1.54%
Dollar Can.	1.40	1.40	0.11%	0.34%	2.10%	1.89%	2.79%
F. Swiss	0.80	0.79	0.24%	0.09%	2.08%	0.53%	-1.65%
Real	5.06	5.10	-0.63%	-2.05%	3.48%	-7.87%	-8.57%
Bitcoin	63,480.45	63,339.83	0.22%	2.63%	-21.31%	-27.57%	-40.12%

% Closures			Pb Variation				
Fees	Current	Previous	1d	5d	1m	Acum. 2026	12m
Cetes28	6.39	6.36	3.00	4.00	-16.00	-75.00	-170.00
Cetes364	6.97	7.02	-5.00	-9.00	-9.00	-60.00	-134.00
TIIE28	6.76	6.74	2.01	15.08	-2.01	-62.31	-198.11
UMS 10a							
Udib 10a	3.83	3.86	-2.33	-10.02	-10.95	-31.00	-68.49
M 2a	7.32	7.38	-5.78	-17.53	-28.77	-15.84	-76.86
M 5a	7.90	7.95	-5.23	-25.23	-34.60	-27.53	-73.22
M 10a	9.02	9.01	0.51	-15.77	-19.60	-9.01	-23.19
M 30a	9.55	9.54	1.00	-6.95	-15.98	3.92	-36.37

Closures			Variation				
Indexes	Current	Previous	1d	5d	1m	Acum. 2026	12m
Dow Jones	51,202	50,849	0.70%	0.66%	2.90%	6.53%	19.16%
S&P 500	7,431	7,394	0.50%	0.65%	0.41%	8.56%	22.93%
Nasdaq	25,889	25,810	0.31%	0.70%	-0.76%	11.39%	31.67%
Russell	4,227	4,207	0.48%	0.88%	0.89%	8.87%	22.99%
SP/BMV IPC	67,955	66,977	1.46%	2.74%	-2.97%	5.67%	17.51%
Bovespa	171,133	171,497	-0.21%	1.25%	-5.11%	6.21%	24.19%
EuroStoxx	6,188	6,057	2.16%	2.07%	6.53%	6.84%	15.42%
Dax	24,635	24,210	1.76%	-0.50%	2.84%	0.59%	3.63%
Cac 40	8,351	8,201	1.83%	1.61%	4.65%	2.47%	7.54%
Ibex 35	18,764	18,290	2.59%	2.29%	6.78%	8.42%	33.19%
FTSE100	10,472	10,304	1.63%	1.00%	2.01%	5.44%	17.86%
FTSEMIB	51,497	50,505	1.97%	3.22%	5.12%	14.58%	28.91%
Nikkei	66,020	64,217	2.81%	-0.85%	7.51%	31.15%	74.50%
HangSeng	24,718	24,249	1.93%	-0.98%	-6.19%	-3.56%	2.84%
Shanghai	4,032	3,987	1.12%	0.09%	-4.34%	1.58%	18.48%
India	75,528	73,833	2.30%	1.73%	0.39%	-11.37%	-6.89%

Closures %			Pb Variation				
Fees	Current	Previous	1d	5d	1m	Acum. 2026	12m
Tbill 1M	3.65	3.64	0.49	-1.11	-0.66	5.55	-54.08
Libor 1M	4.96	4.96	0.16	-0.91	-34.97	-50.90	-47.33
Tbill 12M	3.84	3.84	0.23	0.53	6.43	37.33	-20.99
Libor 12M	6.04	5.96	8.13	11.61	31.11	55.93	242.24
GT 10a	4.48	4.46	1.98	-4.94	1.79	31.39	12.17
Japan 10a	2.62	2.68	-6.10	-4.10	7.25	55.85	117.35
Germany 10th	2.99	3.03	-3.65	-4.33	-10.55	14.04	51.94
U.K. 10a	4.84	4.90	-6.95	-6.75	-26.59	35.90	35.95
France 10th	3.74	3.80	-5.67	5.13	0.58	18.14	56.33
Spain 10th	3.42	3.47	-5.23	-5.53	-11.38	13.26	34.30
Italy 10th	3.72	3.80	-7.56	-7.88	-14.62	17.27	31.68
Brazil 10th	14.37	14.46	-9.36	-47.99	30.30	63.60	37.99

Closures			Variation				
Commodities	Current	Previous	1d	5d	1m	Acum. 2026	12m
Gold	4,214	4,212	0.05%	-2.64%	-10.62%	-2.43%	24.47%
Silver	68	67	0.99%	0.20%	-21.38%	-5.15%	87.03%
Copper	648	628	3.27%	3.11%	-0.08%	14.04%	34.01%
Wti	84	88	-3.94%	-6.95%	-17.55%	46.73%	23.82%
Brent	87	90	-3.97%	-6.77%	-19.47%	42.63%	25.13%
Mixing	86	87	-1.95%	-5.91%	-16.25%	59.51%	35.16%

Disclaimer

The shared reports contain certain current and forward-looking statements and information that are based on public information, obtained from sources believed to be reliable, however, there is no warranty, explicit or implicit, of their reliability, so MONEX does not offer any guarantee as to their accuracy or completeness.

The information presented may be subject to future and uncertain events, which could have a material impact on it.

The public having access to these reports should be aware that the contents of these reports do NOT constitute an offer or recommendation by MONEX to buy or sell securities or currencies, or to carry out specific operations. Likewise, it does not imply for any reason the certification of the goodness of the security or the solvency of the issuer.

